

Fiber Optic Telephone

Model: KNZD-87



Description

- 1.Full duplex communication.
- 2.Supports access to two-wire/twisted pair slaves: 2/4/8/16 units (optional).
- 3.Supports fiber self-healing ring network access.
- 4.Adopts corrosion-resistant and vandal-resistant cold-rolled steel waterproof and dustproof casing to extend the product life cycle, improve product reliability and stability, and prevent vandalism and tampering of hardware.
- 5.Wall-mounted, easy to install.
- 6.Waterproof and dustproof grade IP66.
- 7.With digital dialing keypad.
- 8.3 button programmable phone, support hotline dialing.
- 9.2 customized buttons (optional), support volume adjustment.
- 10.Magnetic reed hook-switch.
- 11.Heavy duty handset with hearing aid compatible receiver, noise canceling microphone.
- 12.Handset with industrial strong armored cable.
- 13.Silicon keypad keep waterproof and dusty proof.
- 14.DC input over-voltage over-current protection and RJ 45 surge protection.
- 15.Temperature range from -40 degree to +70 degree.
- 16.Support echo cancellation.
- 17.Remote software upgrade, configuration and monitoring.
- 18.Optional 7 minutes limited call. (This function is upon buyer's requirement).
- 19.Powder coated in UV stabilized polyester finish,defaulted color yellow.
- 20.Application:Pipeline corridor, power, tunnel, metro, railway, light rail, highway, steel plant, ship, offshore, mine, power plant, bridge, etc.

Specification

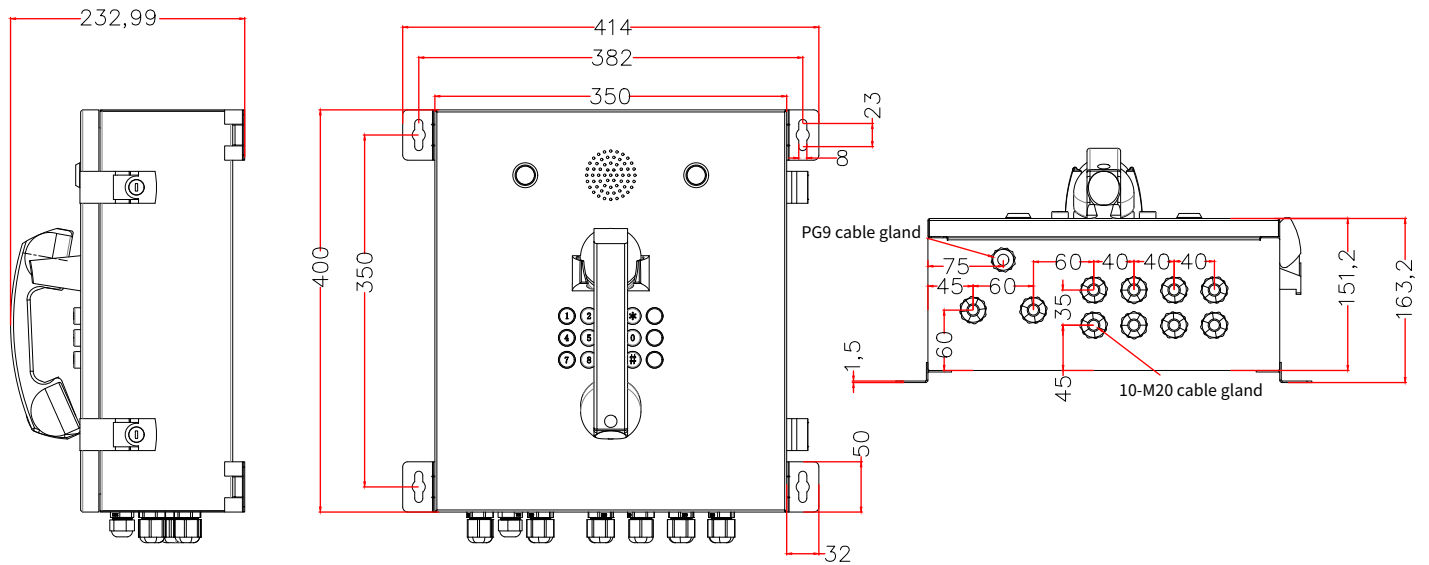
VoIP SIP2.0 telephone	DTMF dialing
MTBF:100000hours	MTTR: 2 hours
Hotline(maximum length of each number is 16 digits)	
Communication: Full duplex 2-way communication	
Call Control Signaling:VOIP SIP Info(DTMF), RFC 2833(DTMF)	
Power:Power over Ethernet, IEEE802.3af, AC100~220V or 12VDC,Idle 2W, Max 10W	
Auxiliary Contacts:1 Aux Output, dry contact Contact Ratings.	
Load: Resistive load Rated load:0.3A at 125VAC; 1A at 30VDC	
Max.switching current:1A	
Audio Codes:G.711, G.723, G.726,G.729	
Protocols:IPv4, TCP, UDP, RTP, RTCP, DHCP, SIP 1 X LAN Protocols:Power over Ethernet(PoE,802.3af), 1 X WLAN(IEEE 802.1x), Network Access Control(IEEE 802.1x),SIP(IEEE 802.1d), RSTP(IEEE 802.1d-2004)	
Programming:Non-volatile flash memory programming and configuration through Web GUI Management and Operation	
Echo cancellation code:ITU-T G.167 / G.168	
Supports 2 RJ45 Ethernet ports and 2 optical ports, SC interface.	
Single-mode single-fiber transmission distance: 20km	
Working wavelength: 1310nm	
Transmission speed: 10 / 100Mbps	
Support IEEE802.3/802.3u /802.3x IEEE802.3z, IEEE802.3u, IEEE802.3ab	
Store and forward mode	
Support STP RSTP RING ring network protection protocol	
Low power design, over-current and over-voltage protection design	

Photo Album



Size Display

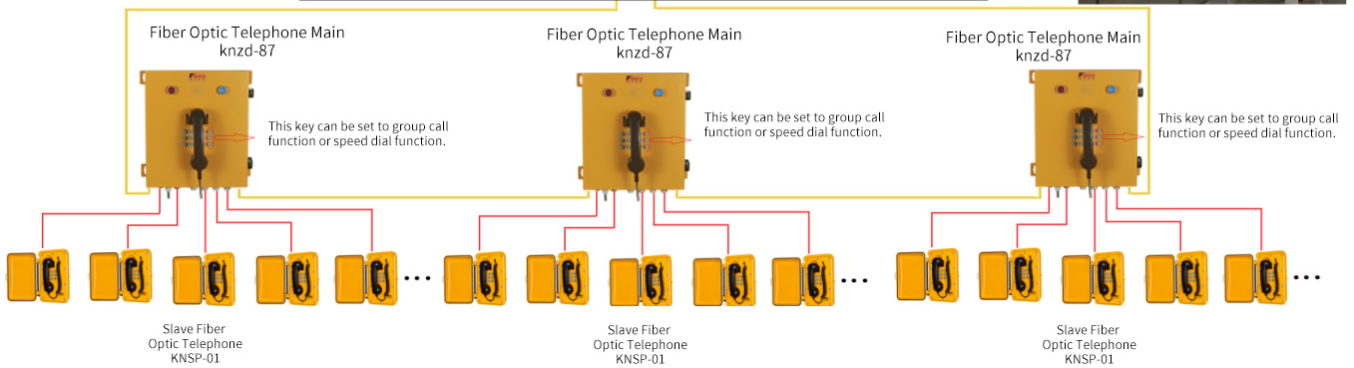
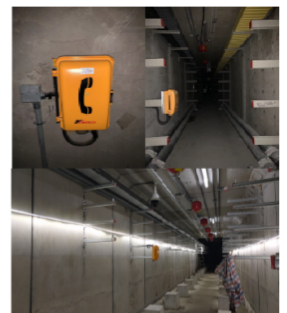
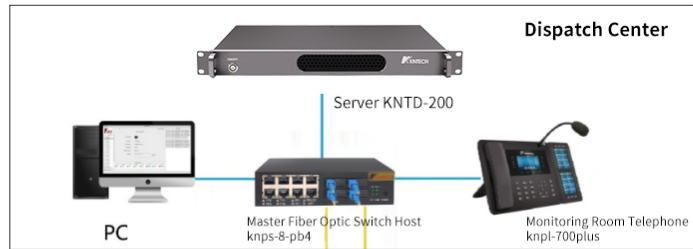
Unit: mm



System Network Diagram

KNTECH Optical Fiber Emergency Telephone Communication System Solution for Integrated Pipe Gallery

- CAT6 Network Cable
- Fiber Optic Cable
- RJ11 Pair Cable



Web: www.koontech.com

Email: marketing@koontech.com

Tel: (HK Office) +852 9068 2799 / (Shenzhen Office) +86 755 2744 8753

Shenzhen Office: 1001 Block A Building T3, Yifang Center, Bao'an, Shenzhen, Guangdong, China

HK Office: Unit C, 2/F, Ka To Factory Building, 2 Cheung Yue Street, Cheung Sha Wan, Kowloon, Hong Kong

Factory: KNTECH Building, Phoenix Mountain, Limhai Zone, Shajiao Community, Humen, Dongguan, China